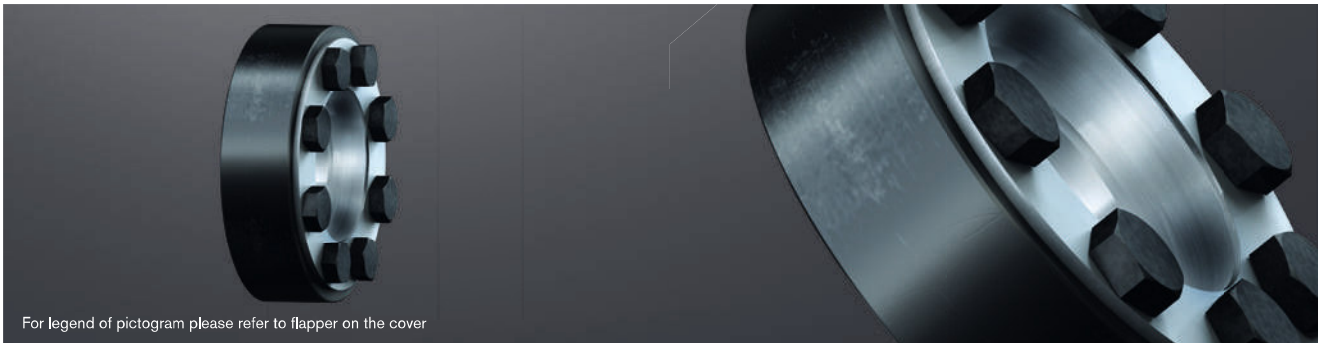


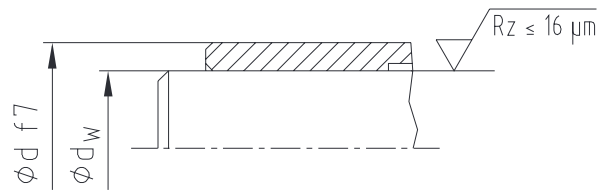
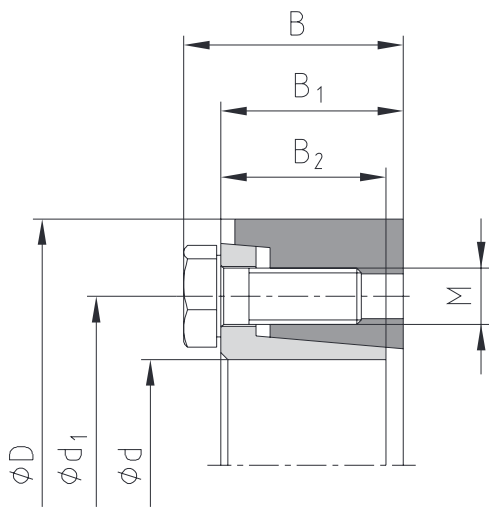
# CLAMPEX® KTR 620

## Clamping elements

Two-part external clamping set for applications on hollow shafts



For legend of pictogram please refer to flapper on the cover



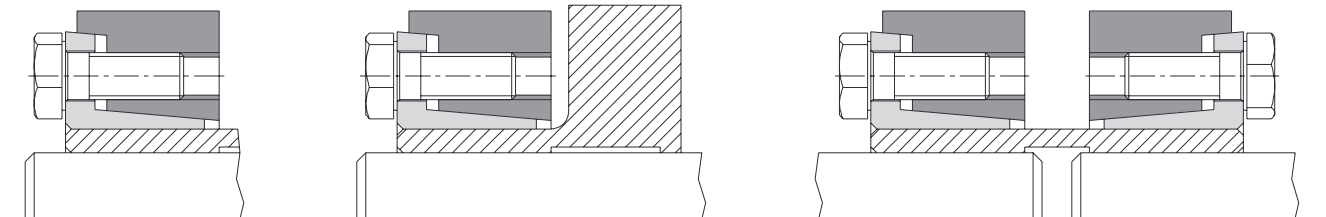
### Tolerances for $d_w$

$$d_w \leq \varnothing 160 = h6/H7$$

$$d_w > \varnothing 160 = g6/H7$$

Bigger tolerances are generally possible! Please contact us!

### Example of application of hub design



Ordering example:

KTR 620	55	x	100
Series	Size of internal diameter d		Size of external diameter D

CLAMPEX® – KTR 620

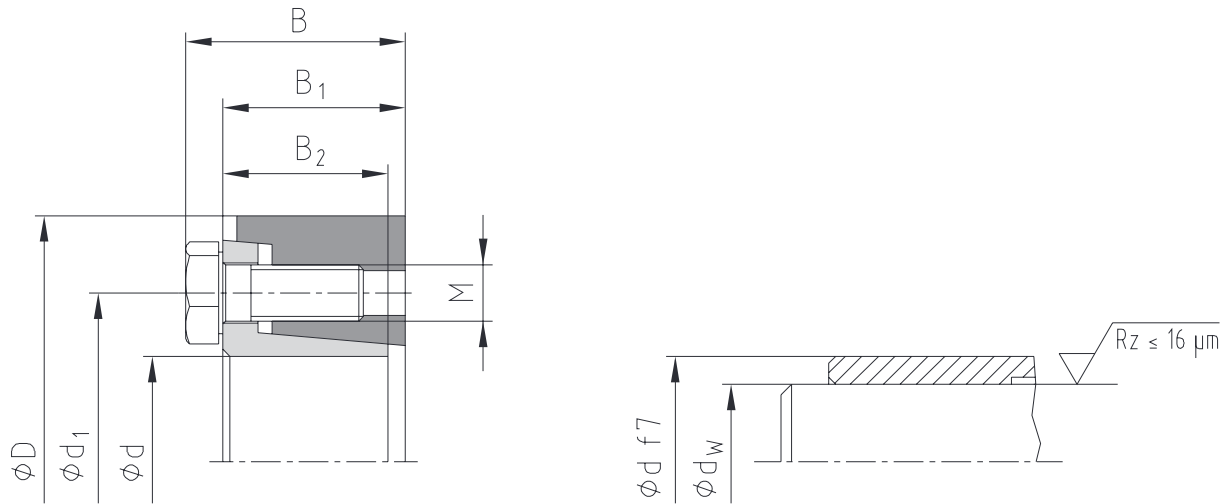
d x D [mm]	Shaft diameter d <sub>w</sub> [mm]	Transmittable torque or axial force		Dimensions [mm]				Clamping screws DIN EN ISO 4017 - 12.9 <sup>1)</sup> μ <sub>total</sub> =0.10				Surface pressure of clamping element/hollow shaft	Weight [-kg]	Stock programme
		T [Nm]	F <sub>ax</sub> [kN]	B	B <sub>1</sub>	B <sub>2</sub>	d <sub>1</sub>	M	Length	z = number	T <sub>A</sub> [Nm]	P <sub>H</sub> [N/mm <sup>2</sup> ]		
NEW 16 x 41	13	70	11	19.5	15.3	13.5	28	M6	12	3	13	254	0.1	
	14	90	13											
NEW 18 x 44	15	80	11	19.5	15.3	13.5	30	M6	12	4	13	222	0.1	
	16	110	14											
20 x 47	17	150	18	19.5	15.3	13.5	32	M6	12	4	13	274	0.1	●
	18	175	19											
24 x 50	19	165	17	22	18.22	16	36	M6	16	5	13	243	0.2	●
	20	215	22											
NEW 26 x 51.5	22	280	25	22	18.05	16	38	M6	16	5	13	238	0.2	
	20	200	20											
30 x 60	22	260	24	24	20.26	18	44	M6	16	6	13	255	0.3	●
	24	330	28											
36 x 72	24	370	31	27.5	22.1	20	52	M8	20	5	30	250	0.5	●
	25	420	34											
38 x 72	26	465	36	27.5	22.1	20	54	M8	20	5	30	240	0.5	●
	27	480	36											
40 x 80	30	650	43	29.5	24.22	22	61	M8	20	6	30	209	0.6	●
	33	835	51											
44 x 80	27	480	36	29.5	24.22	22	61	M8	20	6	30	192	0.6	●
	34	830	49											
50 x 90	35	770	44	31.5	26.1	23.5	68	M8	20	8	30	212	0.8	●
	37	880	48											
55 x 100	38	1130	59	34.5	29	26	72	M8	20	8	30	195	1.1	●
	40	1260	63											
60 x 110	42	1400	67	34.5	29.25	26	80	M8	20	9	30	191	1.3	●
	42	1300	62											
62 x 110	45	1600	71	37.5	31.1	27	104	M10	25	10	60	215	2.3	●
	48	1900	79											
68 x 115	48	1700	71	35	29.4	26	86	M8	20	9	30	206	1.3	●
	50	1950	78											
75 x 138	52	2160	83	37.5	30.7	27	100	M10	25	10	60	211	2.3	●
	48	1700	71											
80 x 141	50	1950	78	44.5	38.2	34	114	M10	25	11	60	216	3.2	●
	52	2160	83											
NEW 85 x 155	55	2500	91	50	43.45	39	124	M10	30	14	60	182	4.3	●
	60	3150	105											
90 x 155	55	2700	98	44.5	38.2	34	114	M10	25	11	60	223	3.2	●
	65	4100	126											
NEW 95 x 170	60	3300	110	50	43.45	39	124	M10	30	14	60	176	4.3	●
	65	5500	169											
100 x 170	65	5500	169	56.5	49.1	43.5	136	M12	35	12	100	208	5.8	●
	70	6600	189											
NEW 105 x 185	75	7900	211	56.5	49.1	43.5	136	M12	35	12	100	202	5.8	●
	70	6200	177											
110 x 185	75	7400	197	60.5	53	48	147	M12	35	14	100	193	6.9	●
	80	8600	215											
NEW 115 x 197	70	6200	177	60.5	53	48	147	M12	35	14	100	189	6.9	●
	80	10500	263											
120 x 197	85	11800	278	60.5	53	48	147	M12	35	14	100	189	6.9	●
	85	12500	294											
NEW 120 x 197	90	14100	313	60.5	53	48	147	M12	35	14	100	189	6.9	●
	95	16000	337											
NEW 120 x 197	85	12500	294	60.5	53	48	147	M12	35	14	100	189	6.9	●
	90	14100	313											
NEW 120 x 197	95	16000	337	60.5	53	48	147	M12	35	14	100	189	6.9	●
	95	16000	337											

● Sizes of clamping elements available from stock.  
<sup>1)</sup> DIN EN ISO 4017-10.9 for size 16 x 41 to 20 x 47

# CLAMPEX® KTR 620

## Clamping elements

Two-part external clamping set for applications on hollow shafts



CLAMPEX® – KTR 620

d x D [mm]	Shaft diameter d <sub>w</sub> [mm]	Transmittable torque or axial force		Dimensions [mm]				Clamping screws DIN EN ISO 4017 - 12.9 μ <sub>total</sub> =0.10				Surface pressure of clamping element/hollow shaft		Weight [-kg]	Stock programme
		T [Nm]	F <sub>ax</sub> [kN]	B	B <sub>1</sub>	B <sub>2</sub>	d <sub>1</sub>	M	Length	z = number	T <sub>A</sub> [Nm]	P <sub>H</sub> [N/mm <sup>2</sup> ]			
125 x 215	90	14500	322	61	53.4	48	158	M12	35	14	100	196	8.7	●	
	95	16600	349												
	100	18800	376												
NEW 130 x 215	95	17000	358	61	53.4	48	158	M12	35	14	100	187	9.4		
	100	18400	368												
	110	22000	400												
130 x 230	95	18400	387	66.5	57.5	51	165	M14	40	12	160	213	10.8	●	
	100	20800	416												
	110	26200	476												
NEW 135x 230	95	18400	387	66.5	57.5	51	165	M14	40	12	160	209	10.8		
	100	20800	416												
	110	26200	476												
140 x 230	100	19900	398	67	57.8	51	172	M14	40	12	160	207	10.3		
	105	22200	423												
	115	27800	483												
NEW 150 x 263	110	27000	491	71	62.2	55	186	M14	40	14	160	202	15.2		
	120	32000	533												
	125	36200	579												
155 x 263	110	27000	491	71	62.2	55	186	M14	40	14	160	199	15.2		
	120	32000	533												
	125	36200	579												
NEW 160 x 290	120	39000	650	78.5	68.5	61	198	M16	45	12	250	215	21.5		
	130	48000	738												
	135	51000	756												
165 x 290	120	39000	650	78.5	68.5	61	198	M16	45	12	250	212	21.5		
	130	48000	738												
	135	51000	756												
NEW 170 x 300	130	46500	715	79	68.9	61	208	M16	50	14	250	212	22.5		
	140	53000	757												
	145	59000	814												
175 x 300	130	46500	715	79	68.9	61	208	M16	50	14	250	209	22.5	●	
	140	53000	757												
	145	59000	814												
NEW 180 x 320	140	66000	943	95	85	77.5	222	M16	50	16	250	210	32.7		
	150	76000	1013												
	155	83000	1071												
185 x 320	140	66000	943	95	85	77.5	222	M16	50	16	250	207	32.7		
	150	76000	1013												
	155	83000	1071												
NEW 190 x 340	150	82000	1093	98	87.7	77.5	238	M16	50	16	250	225	36.3		
	160	91000	1138												
	165	102000	1236												
NEW 195 x 340	150	82000	1093	98	87.7	77.5	238	M16	50	16	250	222	36.3		
	160	91000	1138												
	165	102000	1236												
200 x 340	150	82000	1093	98	87.7	77.5	238	M16	50	16	250	219	36.3		
	160	91000	1138												
	165	102000	1236												

● Sizes of clamping elements available from stock.

CLAMPEX® – KTR 620

d x D [mm]	Shaft diameter d <sub>w</sub> [mm]	Transmittable torque or axial force		Dimensions [mm]				Clamping screws DIN EN ISO 4017 - 12.9 <sup>2)</sup> μ <sub>total</sub> =0.10				Surface pressure of clamping element/hollow shaft	Weight [-kg]	Stock programme
		T [Nm]	F <sub>ax</sub> [kN]	B	B <sub>1</sub>	B <sub>2</sub>	d <sub>1</sub>	M	Length	z = number	T <sub>A</sub> [Nm]	P <sub>H</sub> [N/mm <sup>2</sup> ]		
220 x 370	160	105000	1313	120	107,55	96,5	268	M20	60	15	480	205	53	
	170	122000	1435											
	180	138000	1533											
240 x 405	170	125000	1471	123,5	111,1	98	288	M20	60	16	480	214	66	
	180	145000	1611											
	200	182000	1820											
260 x 430	190	165000	1737	138	125,3	110,5	312	M20	60	16	480	202	82	
	200	190000	1900											
	220	238000	2164											
280 x 460	210	220000	2095	152,5	140	121	334	M20	60	18	480	193	103	
	220	245000	2227											
	240	300000	2500											
300 x 485	220	297000	2700	159	139,8	124	360	M24	70	16	840	205	120	
	230	330000	2870											
	250	399000	3192											
320 x 520	240	331000	2758	160,5	141,6	124	380	M24	70	18	840	190	138	
	250	365000	2920											
	270	437000	3237											
340 x 570	250	429000	3432	177,5	158,4	139	402	M24	70	18	840	195	189	
	260	469000	3608											
	280	556000	3971											
360 x 590	270	545000	4037	182	163	143	424	M24	70	20	840	216	207	
	280	592000	4229											
	290	694000	4786											
NEW 390 x 650	290	704000	4855	191	169,2	148	454	M27	70	18	1250	216	249	
	300	760000	5067											
	320	879000	5494											
NEW 420 x 670	320	827000	5169	208,4	186,4	166	486	M27	70	20	1250	184	285	
	330	876000	5309											
	350	1000000	5714											
NEW 440 x 710	340	1117000	6571	220	198	179	506	M27	70	21	1250	222	343	
	350	1190000	6800											
	370	1345000	7270											
NEW 460 x 750	360	1306000	7256	223	201	179	534	M27	70	21	1250	230	387	
	370	1386000	7492											
	390	1554000	7969											
NEW 470 x 705	370	950000	5135	241,6	219,6	200	538	M27	70	21	1250	151	340	
	380	1000000	5263											
	400	1150000	5750											
NEW 480 x 770	380	1557000	8195	247	223	201	552	M30	100	21	1650	223	449	
	390	1648000	8451											
	410	1818000	8868											
NEW 500 x 820	400	1653000	8265	241	217	198	572	M30	100	24	1650	214	515	
	410	1725000	8415											
	430	1915000	8907											
NEW 530 x 850	430	2048000	9526	262,3	238,3	216	606,5	M30	100	24	1650	208	585	
	440	2154000	9791											
	460	2374000	10322											
NEW 560 x 885	450	2306000	10249	266	242	220	632	M30	100	24	1650	212	636	
	460	2419000	10517											
	480	2654000	11058											
NEW 590 x 950	470	2735000	11638	281,5	257,5	236	664	M30	100	28	1650	211	805	
	480	2863000	11929											
	500	3128000	12512											
NEW 620 x 960	500	3150000	12600	307	283	258	706	M30	100	28	1650	201	853	
	520	3396000	13062											
	540	3689000	13663											
NEW 660 x 1020	530	3636000	13721	319	293	267	748	M33	130	28	2250	199	993	
	550	3942000	14335											
	570	4261000	14951											
NEW 700 x 1085	560	4189000	14961	318,5	292,5	263	788	M33	130	28	2250	187	1112	
	580	4520000	15586											
	600	4863000	16210											
NEW 750 x 1100	600	5281000	17603	346	320	280	850	M33	130	32	2250	202	1111	
	620	5672000	18297											
	650	6287000	19345											
NEW 800 x 1230	640	6091000	19034	359	333	296	900	M33	130	32	2250	202	1589	
	660	6511000	19730											
	700	7394000	21126											

● Sizes of clamping elements available from stock.  
<sup>2)</sup> DIN EN ISO 4014-12.9 for size 660 x 1020 to 800 x 1230