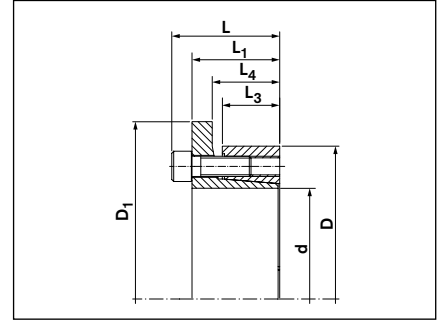
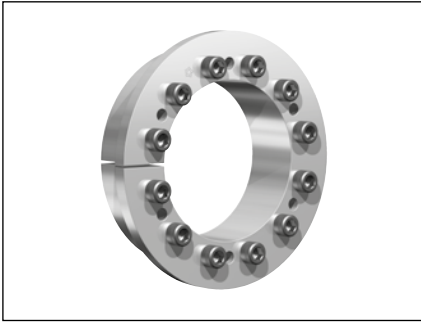


**Locking Assemblies**

# 7006 ECOLOC



Dimensions

**Explanations**

- d** = Inner ring diameter
- D** = Outer diameter
- D<sub>1</sub>** = Collar outer diameter
- L** = Overall width
- L<sub>1</sub>** = Overall width (without screws)

- L<sub>3</sub>** = Clamping length
- L<sub>4</sub>** = Installation length up to collar
- T** = Transmissible torque at given  $T_A$
- F<sub>ax</sub>** = Transmissible axial force
- T<sub>A</sub>** = Max. tightened torque of the screws

- PW** = Surface pressure on shaft at given  $T_A$
- P<sub>N</sub>** = Surface pressure on hub at given  $T_A$
- n<sub>Sc</sub>** = Quantity of locking screws
- D<sub>G</sub>** = Thread

Metric dimensions													Screws ISO 4762-12.9		
d	x	D	D <sub>1</sub>	L	L <sub>1</sub>	L <sub>3</sub>	L <sub>4</sub>	T	F <sub>ax</sub>	T <sub>A</sub>	PW	P <sub>N</sub>	n <sub>Sc</sub>	D <sub>G</sub>	
mm			mm					Nm	kN	Nm	N/mm <sup>2</sup>				
19	x	47	56	34	28	17	23	270	28	17	215	95	5	x	M 6
20	x	47	56	34	28	17	23	280	28	17	215	95	5	x	M 6
22	x	47	56	34	28	17	23	310	28	17	195	95	5	x	M 6
24	x	50	59	34	28	17	23	400	32	17	215	105	6	x	M 6
25	x	50	59	34	28	17	23	440	34	17	210	105	6	x	M 6
28	x	55	64	34	28	17	23	490	34	17	195	100	6	x	M 6
30	x	55	64	34	28	17	23	530	34	17	185	100	6	x	M 6
32	x	60	69	34	28	17	23	750	46	17	210	110	8	x	M 6
35	x	60	69	34	28	17	23	820	46	17	185	110	8	x	M 6
38	x	65	74	34	28	17	23	890	46	17	190	110	8	x	M 6
40	x	65	74	34	28	17	23	940	46	17	185	110	8	x	M 6
42	x	75	84	41	33	20	27	1.600	70	41	240	130	7	x	M 8
45	x	75	84	41	33	20	27	1.720	70	41	225	130	7	x	M 8
50	x	80	89	41	33	20	27	1.890	74	41	205	125	7	x	M 8
55	x	85	94	41	33	20	27	2.400	76	41	210	130	8	x	M 8
60	x	90	99	41	33	20	27	2.650	76	41	185	120	8	x	M 8
65	x	95	104	41	33	20	27	3.190	80	41	195	130	9	x	M 8
70	x	110	119	50	40	24	32	4.910	130	83	215	135	8	x	M 10
75	x	115	124	50	40	24	32	5.150	130	83	195	125	8	x	M 10
80	x	120	129	50	40	24	32	5.490	130	83	185	120	8	x	M 10
85	x	125	134	50	40	24	32	6.620	140	83	195	130	9	x	M 10
90	x	130	139	50	40	24	32	6.960	140	83	185	125	9	x	M 10
95	x	135	144	50	40	24	32	8.190	160	83	195	135	10	x	M 10
100	x	145	154	56	44	26	34	10.100	170	145	205	145	8	x	M 12
110	x	155	164	56	44	26	34	11.000	170	145	190	135	8	x	M 12

Material: Steel

To continue see next page

**Locking Assemblies**
**7006 ECOLOC**

Metric dimensions													Screws ISO 4762-12.9		
d	x	D	D <sub>1</sub>	L	L <sub>1</sub>	L <sub>3</sub>	L <sub>4</sub>	T	F <sub>ax</sub>	T <sub>A</sub>	PW	PN	n <sub>Sc</sub>	D <sub>G</sub>	
mm				mm				Nm	kN	Nm	N/mm <sup>2</sup>				
120	x	165	174	56	44	26	34	13.600	200	145	205	140	9	x	M 12
130	x	180	189	64	52	34	42	19.000	250	145	185	135	12	x	M 12
140	x	190	199	68	54	34	42	21.800	270	230	175	125	9	x	M 14
150	x	200	209	68	54	34	42	25.600	320	230	185	135	10	x	M 14
160	x	210	219	68	54	34	42	26.100	320	230	175	135	11	x	M 14
170	x	225	234	78	64	44	52	30.300	340	230	140	105	12	x	M 14
180	x	235	244	78	64	44	52	32.000	340	230	135	105	12	x	M 14
190	x	250	245	78	64	44	52	50.000	525	230	157	119	15	x	M 14
200	x	260	269	78	64	44	52	52.800	528	230	149	115	15	x	M 14
220	x	285	295	91	75	50	57	64.500	585	355	129	100	12	x	M 16
240	x	305	315	91	75	50	57	88.000	730	355	148	116	15	x	M 16
260	x	325	335	91	75	50	57	114.000	880	355	145	116	16	x	M 16
280	x	355	365	105	87	60	66	123.100	880	480	141	111	16	x	M 18
300	x	375	384	102	84	60	66	148.250	985	480	146	117	18	x	M 18
320	x	405	414	121	101	74	81	182.500	1.140	690	125	110	18	x	M 20
340	x	425	434	121	101	74	81	218.000	1.280	690	135	110	21	x	M 20
360	x	455	464	137	115	86	93	290.000	1.600	930	135	110	18	x	M 22
380	x	475	484	137	115	86	93	305.000	1.600	930	130	105	21	x	M 22
400	x	495	504	137	115	86	93	355.000	1.775	930	135	110	21	x	M 22

Material: Steel

More sizes on request

**Ordering example:**

Type	d x D
7006 ECOLOC	55 x 85

**Technical Information**
**■ Surface finishes**

 For shafts and hub bores  
**R<sub>a</sub> = 1,6 µm**
**■ Tolerances**

 We recommend the following mounting tolerances  
**Shaft: h8 · Hub: H8**

Subject to technical changes.